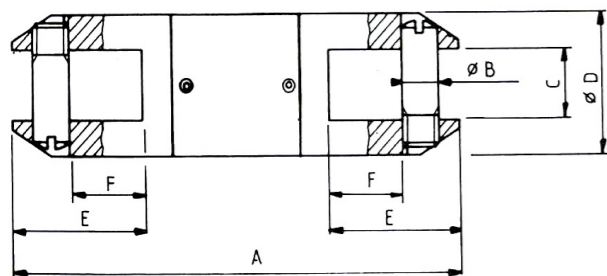


Overhead pulling grip and swivel

Swivel



U356-14



MIRELEC

Application

This overhead swivel is used between two overhead pulling grips to replace an old conductor by a new one or between a pulling grip and the wire rope on the winch.

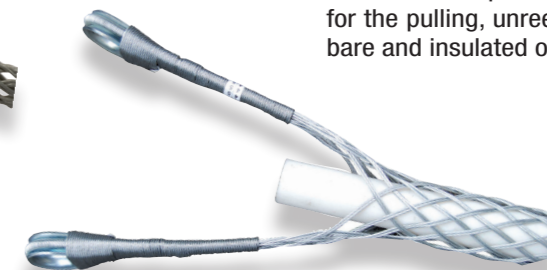
It prevents any twisting of the conductor during pulling, unreeling and laying. All of the parts are made of alloyed steel.

Code	Designation	A (mm)	B (mm)	C (mm)	Ø D (mm)	E (mm)	Linear break-down (daN)	Weight (kg)	Sales unit
U356-14	OVERHEAD SWIVEL DIAMETER 14	61	6	6	14	16	1 650	0.075	1
U356-16	OVERHEAD SWIVEL DIAMETER 16	70	6.5	8	16	19	1 700	0.100	1
U356-22	OVERHEAD SWIVEL DIAMETER 22	88	8.5	10	22	29	4 600	0.230	1
U356-34	OVERHEAD SWIVEL DIAMETER 34	122	12	16	34	35	6 500	0.520	1
U356-38	OVERHEAD SWIVEL DIAMETER 38	122	12	16	38	35	9 500	0.690	1
U356-55	OVERHEAD SWIVEL DIAMETER 55	200	16	32	55	35	5 000	2.000	1

Single and double eye grip



Single grip



Double grip

MIRELEC

Application

This overhead pulling grip is designed for the pulling, unreeling and laying of bare and insulated overhead cables.

Description

- Eyes are made of galvanised steel.
- The single eye grip gets a grip at one of its ends and is closed at the other end (with a spliced core lug). It is used for cable-end pulling.
- The double eye grip is opened at both ends. It is used to start the pulling at the cable-end and to continue it in any part of the cable.

Code	Designation	Ø of cables (mm)	Maximum operating load (T)	M (mm)	N (mm)	Weight (kg)	Sales unit
SINGLE GRIP							
U357-8	OVERHEAD PULLING GRIP SINGLE EYE Ø 8	8 to 10	0.400	250	125	0.070	1
U357-10	OVERHEAD PULLING GRIP SINGLE EYE Ø 10	10 to 15	0.400	300	125	0.070	1
U357-15	OVERHEAD PULLING GRIP SINGLE EYE Ø 15	15 to 20	0.800	350	130	0.129	1
U357-20	OVERHEAD PULLING GRIP SINGLE EYE Ø 20	18 to 25	0.800	425	130	0.135	1
U357-25	OVERHEAD PULLING GRIP SINGLE EYE Ø 25	23 to 30	1.650	475	135	0.225	1
U357-30	OVERHEAD PULLING GRIP SINGLE EYE Ø 30	30 to 38	1.650	500	135	0.230	1
U357-35	OVERHEAD PULLING GRIP SINGLE EYE Ø 35	35 to 43	3.400	525	150	0.445	1
U357-40	OVERHEAD PULLING GRIP SINGLE EYE Ø 40	40 to 50	3.400	575	155	0.480	1
DOUBLE GRIP							
U358-8	OVERHEAD PULLING GRIP DOUBLE EYE Ø 8	8 to 10	0.400	250	125	0.100	1
U358-10	OVERHEAD PULLING GRIP DOUBLE EYE Ø 10	10 to 15	0.400	300	125	0.142	1
U358-15	OVERHEAD PULLING GRIP DOUBLE EYE Ø 15	15 to 20	0.800	350	130	0.150	1
U358-20	OVERHEAD PULLING GRIP DOUBLE EYE Ø 20	18 to 25	0.800	425	130	0.157	1
U358-25	OVERHEAD PULLING GRIP DOUBLE EYE Ø 25	23 to 30	1.650	475	135	0.271	1
U358-30	OVERHEAD PULLING GRIP DOUBLE EYE Ø 30	30 to 38	1.650	500	135	0.276	1
U358-35	OVERHEAD PULLING GRIP DOUBLE EYE Ø 35	35 to 43	3.400	525	150	0.520	1
U358-40	OVERHEAD PULLING GRIP DOUBLE EYE Ø 40	40 to 50	3.400	575	155	0.560	1

The same models are available in stainless steel or in Rilsan. Please contact us. Further models type sleeved are also available.